



NRCS registration number: Act5GNR 529/280907/040/0525

RESIDUAL SANITISER THAT KILLS
99.999% HARMFUL PATHOGENS

PRODUCT CATALOGUE



MISTING



SURFACE SANITATION



HAND HYGIENE



CONCENTRATE



WIPES



Powered by

rbt®

Residual Barrier Technology

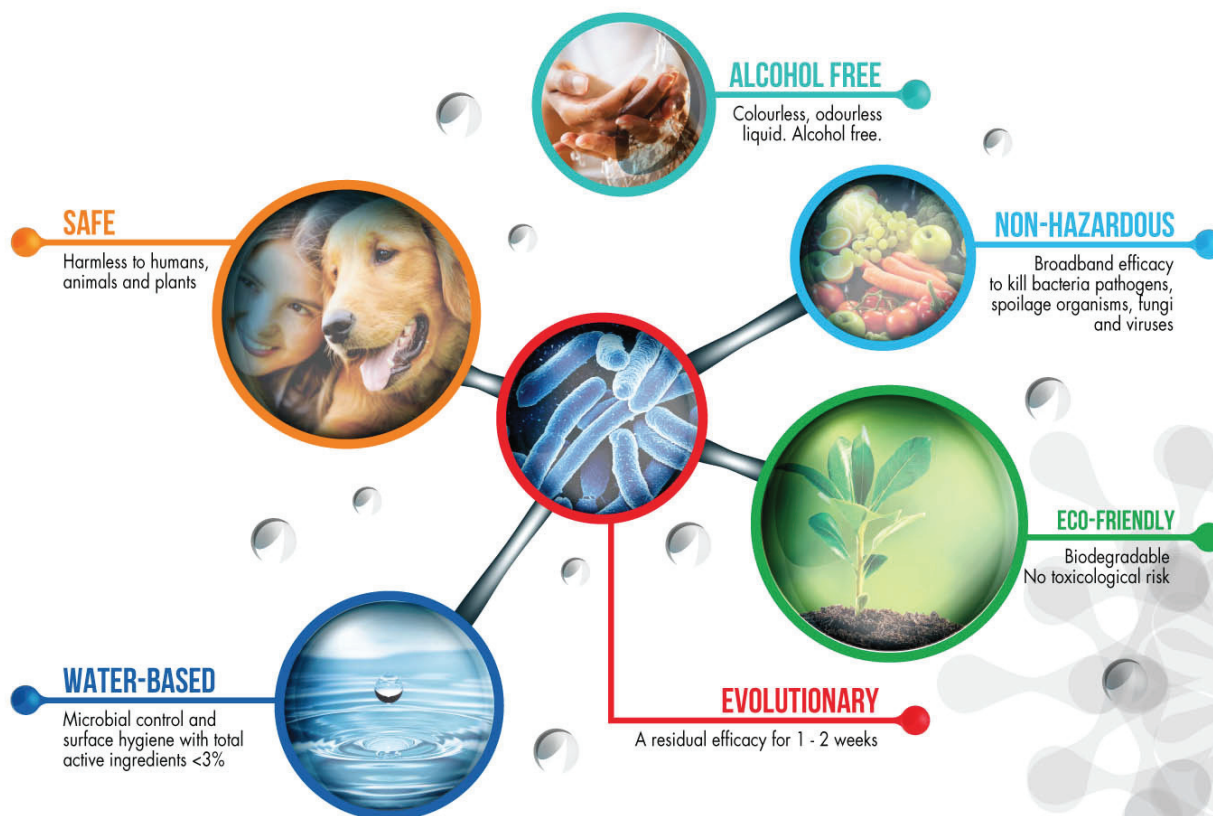


RESIDUAL BARRIER TECHNOLOGY

RBT 24/7

WHAT IS RESIDUAL BARRIER TECHNOLOGY?

Residual Barrier Technology improves hygiene and reduces the risk of contamination and infection. The core part of our product is 'antimicrobial' - a substance that eradicates or inhibits the growth of microorganisms such as bacteria, fungi or protozoa. Not only does **RBT24/7** eradicate but also prevents the re-growth of micro-organisms on surfaces.



BENEFITS:

- Kills known bacteria, viruses and fungi rapidly and efficiently
- Eliminates harmful pathogens at log 5 (99.999%) and for certain pathogens even up to log 7 (99.99999%)
- Continues to kill harmful pathogens - i.e. residual efficacy on skin with RBT lasts up to 7 hours or from wash to wash
- Coating the tested surfaces by creating an active barrier lasting for 7 days without affecting the surface properties
- Stops development of mutant strains
- Colourless, odourless, vapour free
- Alcohol free
- Residual effect
- Active when dry
- Effective in air spaces and soiled conditions
- Environmental friendly
- Water based



Powered by
rbt[®]
Residual Barrier Technology



NRCS Reg No: Act5GNR529/280907/040/0525

RESIDUAL **SANITISER** LIVESTOCK



Highly effective and economic disinfectant for the use at livestock:
FARMING | COMMERCIAL | ABATTOIRS

The dilution rates recommended will be:

1:3 Highly infected areas

1:10 Infected areas

1:100 General use

1. 1 lt with Trigger Spray

Code: 01-1ECO

10 per box

Box dimensions

350 mm x 240 mm x 280 mm

Ready to use



2. 1 lt Bottle Concentrate

Code: 15-1ECO

10 per box

Box dimensions

350 mm x 240 mm x 280 mm

Dilution

• **1:3 Highly infected areas**

• **1:10 Infected areas**

• **1:100 General use**



3. 5 lt Bottle Concentrate

Code: 15-5ECO

2 per box

Box dimensions:

270 mm x 180 mm x 300 mm

Dilution

• **1:3 Highly infected areas**

• **1:10 Infected areas**

• **1:100 General use**



4. 20 lt Can Concentrate

Code: 15-20ECO

Dilution

• **1:3 Highly infected areas**

• **1:10 Infected areas**

• **1:100 General use**



Powered by



rbt®

Residual Barrier Technology



NRCS Reg No: Act5GNR529/280907/04/0525

RBT 24/7